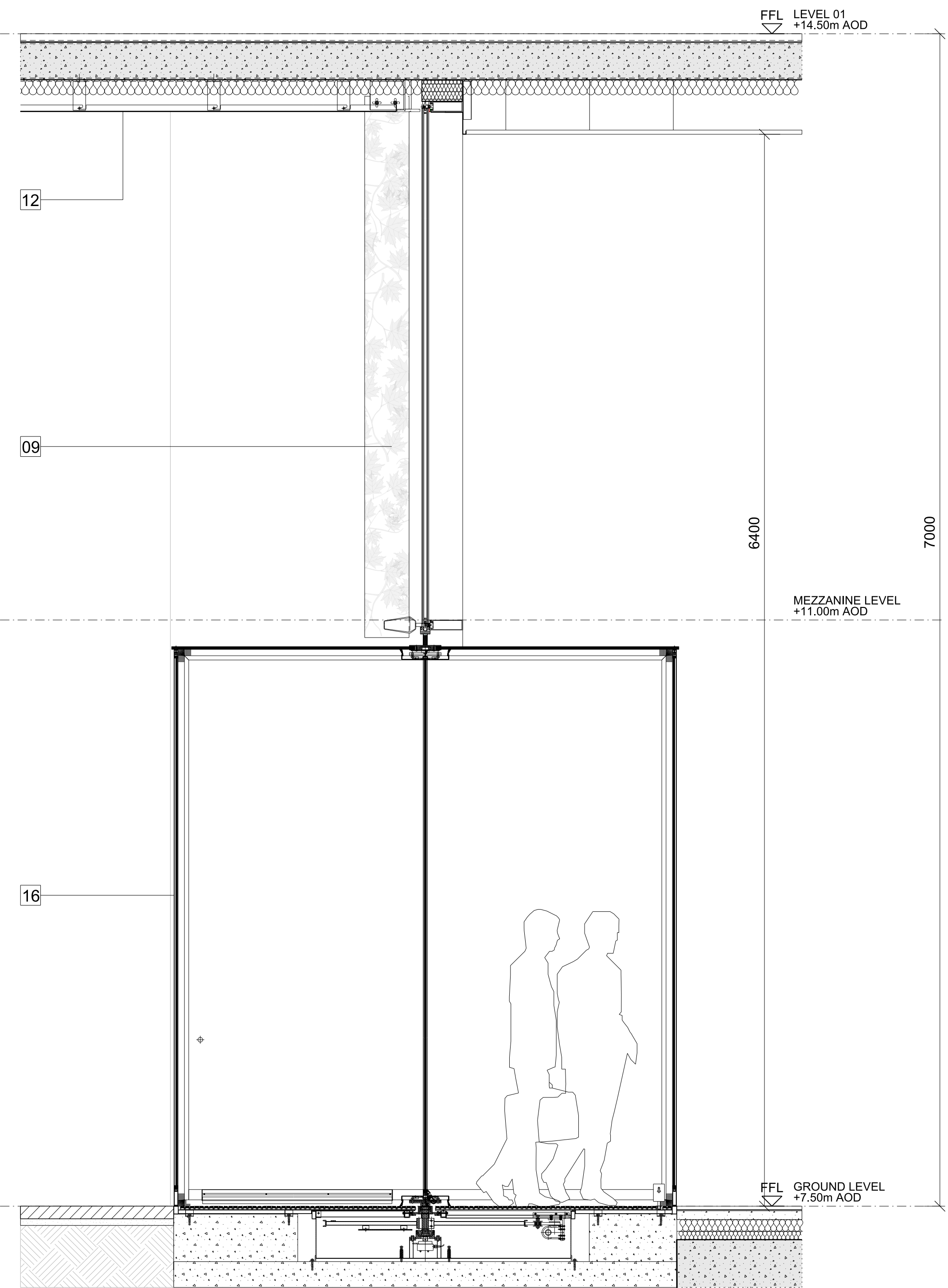


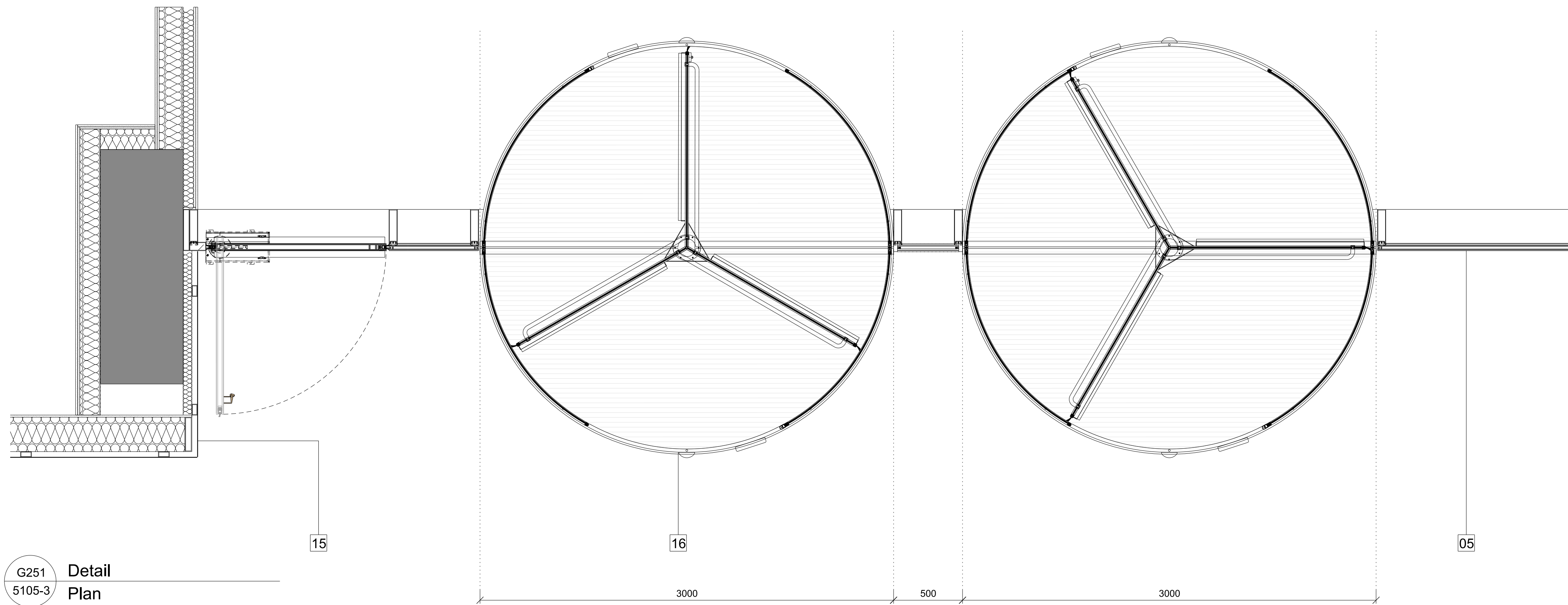
G251  
5105-1

Detail  
Elevation



G251  
5105-2

Detail  
Section



G251  
5105-3

Detail  
Plan

#### ELEVATION KEY

- 01 PRE-CAST RECONSTITUTED STONE FLOOR PROFILE
- 02 PORTLAND STONE CLADDING PANELS WITH FILLED JOINTS
- 03 BRONZE FRAME WITH LAMINATED FROSTED GLASS FINS WITH LEAF FRIT PATTERN
- 04 PERFORATED ANODISED BRONZE ALUMINIUM SCREEN/BALUSTRADE WITH LEAF PATTERN
- 05 CLEAR FULL HEIGHT GLAZED UNITS IN ANODISED BRONZE ALUMINIUM FRAME
- 06 BACKPAINTED FULL HEIGHT GLAZED UNITS WITH BRONZE ALUMINIUM FRAME
- 07 CLEAR FULL HEIGHT GLAZED UNITS WITH BRONZE COLOURED LEAF FRIT PATTERN IN GLASS BUILD-UP
- 08 ANODISED BRONZE ALUMINIUM FASCIA TO ROLLER BLIND BOX
- 09 LAMINATED GLASS FINS WITH BRONZE COLOURED LEAF FRIT PATTERN IN GLASS BUILD-UP
- 10 GLASS BALUSTRADE
- 11 BRONZE MOSAIC TILE INLAY TO PRE-CASE CONCRETE SOFFIT PANEL
- 12 ANODISED BRONZE ALUMINIUM SOFFIT PANEL
- 13 ANODISED BRONZE ALUMINIUM CLADDING PANEL
- 14 CLEAR STRUCTURAL SILICONE GLAZING SYSTEM WITH LAMINATED GLASS MULLIONS
- 15 TEXTURED AND PATTERNED BRONZE CLADDING PANELS
- 16 AUTOMATED GLASS REVOLVING DOORS WITH GLASS ROOF
- 17 CLEAR FULL HEIGHT SINGLE GLAZED FIXED PANEL WITH BRONZE LEAF FRIT PATTERN
- 18 CLEAR FULL HEIGHT SINGLE GLAZED SLIDING DOOR
- 19 CLEAR FULL HEIGHT DOUBLE GLAZED SLIDING DOOR
- 20 CLEAR FULL HEIGHT DOUBLE GLAZED UNITS WITH EXPRESSED BRONZE ANODISED ALUMINIUM CAPPING TO MULLION AND TRANSOM
- 21 BRONZE ANODISED ALUMINIUM PLANTING SCREEN
- 22 AUTOMATED GLASS SLIDING ENTRANCE DOORS
- 23 RECONSTITUTED STONE REVEAL
- 24 CLEAR FULL HEIGHT SINGLE GLAZED DOORS

This drawing is copyright  
Do not scale off dimensions.  
All dimensions to be checked on site by contractor.  
Contractor to report any dimensional discrepancies,  
errors or omissions prior to commencing on site.

#### NOTE:

#### NORTH

Rev	Date	Description	Rev	Date	Description
-	15/05/2018	Full Planning Application			
A	11/01/2019	GLA Call-in Amendments			

500 0 500 1000 2000mm

Project Title  
Kensington Forum Hotel  
Kensington, London

Drawing Title  
Podium - Hotel Entrance

Job No 10106	Scale 1:20@ A0	Date JAN 2019
Drawing No 10106-A-DRG-Z0-G251-5105-PL	Revision A	

**simpsonhaugh**

MANCHESTER  
Riverside, 4 Commercial St  
M4 6DY Tel: 0161 835 2345  
www.simpsonhaugh.com

LONDON  
2nd Roberts Place  
LONDON EC1A 1JY  
Tel: 020 7586 9800  
mail@simpsonhaugh.com